

# The Shallowford Steeple

Lewisville United Methodist Church, Lewisville, NC

January 3, 2007

## A NEW YEAR...A NEW CREATION

Lloyd C. Douglas, noted author, tells of visiting an elderly friend. Douglas greeted the life-long music teacher with this question: “Well, Professor, what’s the good news today?” Instead of answering immediately, he walked to where a tuning fork was suspended from the ceiling by a silken string. As he struck the fork with a mallet, he produced a pure and beautiful tone.

“That, my friend, is ‘A’ — it was ‘A’ yesterday, it will be ‘A’ tomorrow or a thousand years from now. The soprano who lives above me warbles off key, the tenor next door flats his high notes, and the piano across the hall is really out of tune. But that (as he strikes the tuning fork again) is ‘A.’” And that is the good news for today.”

The good news for us, as we move into a new year of opportunity, challenge, and excitement, is that Jesus Christ is the same yesterday, today, and tomorrow. As the music teacher was excited over the eternity of “A,” so we find, as John records it in the first chapter of the Gospel of John, the good news is the eternity of Jesus Christ.

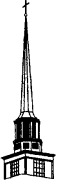
And if Christ is at the heart of God, we cannot ask for a more intimate relationship with the divine than Christ offers. It is the same connection with us, the created, that God has sought since the beginning of time.

Join us this first Sunday in January as we continue to see how Christ continues to be shown forth along our journey of life.

Grace and peace in 2007,  
*Charles*



# The Shallowford Steeple



**Lewisville United Methodist Church**  
**6290 Shallowford Road**  
**P. O. Box 305**  
**Lewisville, NC 27023**  
**Phones: 945-3203/945-4419**  
**Fax (Church): 945-0925**  
**Website: [www.lewisvilleumc.org](http://www.lewisvilleumc.org)**  
**Church E-mail: [tonijonessec@alltel.net](mailto:tonijonessec@alltel.net)**

**Address Service Requested**

---

Pre-Sorted Standard  
U.S. Postage  
PAID  
Lewisville, NC 27023  
Permit No. 1

---

**DATED MATERIAL**

## Ministry and Staff of the Church

District Superintendent  
*J. Hurley Thomas, III*  
Pastor  
*Charles Turner*  
Director of Christian Education  
*June Hayes*  
Music Director  
*Debby Trivett*  
Youth Director  
*Jesse Arnett*  
Missionary to Bolivia  
*Susan Henry*  
Chairperson of Administrative Board  
*John Wells*  
Chairperson of Council on Ministries  
*Margy Smith*  
Lay Leader  
*Jim Fridy*  
School Care Director  
*Kim Jackson*  
Preschool Director  
*Marcia Sexton*  
Secretary  
*Toni Jones*

**Gift for the month of January for Crisis Control:  
applesauce**

**LCAP gift for the month of January:  
cereal**



**Tuesday, January 9th , is the  
deadline for news to be submit-  
ted for the January 17th issue  
of The Steeple.**

# One group news & events

**Sunday, January 7th:** Regular schedule  
4:45-6:15 pm Junior and Senior High Youth  
6:15-6:35 pm Snack Supper

**Saturday, January 13th: Junior High Ski Trip to Beech Mountain!** We will meet at the church at 8:30 am and return at approximately 8:00 pm. See Jesse if you need a flyer or permission slip.



**Sunday, January 14th:** Regular schedule



**On Sunday, January 21st, we will be hosting a Get Hooked! event for Carolina Cross Connection.** Get Hooked! is a time of worship, games, and testimonies, as well as a presentation about the summer ministries of Carolina Cross Connection. We will be hosting youth groups from all over the area for this event. All youth and their parents are encouraged to attend! The event will be from 6:00-7:45 pm in the fellowship hall and a snack supper will be provided. Don't miss it!

**Sunday, January 28th:** Regular schedule

**The Senior High Ski Retreat is February 16th-18th.** We will be staying at the Arnett family cabin in West Jefferson and skiing at Beech Mountain. Mark your calendars!



**\* Reminder for Junior High Students: All forms and money for the ski trip must be turned in to Jesse by Sunday, January 7th!**



Come to UMYF!

# UMW NEWS

## UMW CIRCLE MEETINGS:

- ° **The UMW Morning Circle** will meet on Monday, January 8th, at 10 am in the parlor. Julie Morris will present the program on Hospice.
- ° **UMW Circle 1** will meet on Monday, January 8th, at 7 pm in Asbury Hall.
- ° **The Melba Forbis Friendship Circle** will meet on Tuesday, January 9th, at 7 pm in Asbury Hall.
- ° **The Circle of Concern** will meet on Tuesday, January 16, at 7 pm in the Yokefellow Class. Hostesses will be Margaret Williams and Suzanne Farlow.

## **“Souper Bowl” Sunday: February 4th**

Once again, the LUMC youth group is participating in a national effort of raising money for local helping ministries. Our youth group will be joining many other groups across the country as they participate in this “Souper Bowl” Sunday.

God created us at different times, in different places, and with flesh of a hundred different hues, but we are set forth with a common purpose: “to love the Lord our God...and to love our neighbor as ourself.”



## **MONDAY CHOIR REHEARSALS RESUME ON JANUARY 8TH**

4:00-5:00 pm Youth Handbells  
6:30-7:15 pm Children’s Choir  
7:30 pm Adult Handbell Choir



## **POT LUCK SUPPER** Wednesday, January 3rd 6:30 pm

Please bring food to share and join us at 6:30 pm in the fellowship hall for a time of fellowship and good food.

**Special thanks to all those willing participants in the UM Student Day Worship Service. You truly gave from your hearts.**

**Sympathy:** We express our Christian love and sympathy to the family of Rachel Reich, who passed away December 28th after a valiant battle with cancer.



## **SIGN UP NOW FOR THE 2007 FLOWER CALENDAR WHILE MOST DATES ARE STILL AVAILABLE!**

Remember your loved ones...put flowers in the church in memory or in honor of someone. Celebrate a special occasion with flowers. Our standing order with Wilson’s Florist costs \$32.10 for 2 vases. You can have them do a special arrangement if you prefer (with the cost depending on what you select) or you can order through any florist you choose. Call the church office (945-3203) to reserve a date.

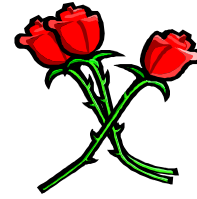
## **FRESH PECANS ARE HERE!**

Pecans are available for purchase. Cost is \$8.00 per 1-lb. bag, pieces or halves. Call (945-3203) or come by the church office.

# STEWARDSHIP

## RECORD OF FAITHFULNESS

As members, we uphold the Church with our promise to give of our presence, gifts, prayers, and service.



### Promises to Keep: Presence

- Dec. 24 Sunday School: 127  
Worship: 294
- Dec. 31 Sunday School: No Sunday School  
Worship: 168

### Promises to Keep: Gifts

- |         |                    |            |
|---------|--------------------|------------|
| Dec. 24 | General Budget     | \$7,104.98 |
|         | Music Fund         | \$ 25.00   |
|         | Discretionary Fund | \$ 892.88  |
| Dec. 31 | General Budget     | \$8,305.00 |
|         | Missions           | \$ 100.00  |
|         | Africa University  | \$ 250.00  |
|         | CCC Tool Drive     | \$ 500.00  |
|         | LCAP               | \$ 200.00  |
|         | Youth Fund Gift    | \$ 750.00  |

## MEMORIALS AND HONORARIUMS

### General Budget Gifts:

In memory of **Frank Kelly**, Debby Trivett's father and Kyle and Kevin Shuping's grandfather, by Jon and Beth Johnson;

In memory of **Janie Marshall** by Hilda Moser and family;

In memory of **Bill and Betty Hewett** by Tanya and David Kivett;

In honor of the **dear folks from our church who visit Vienna Village every Thursday** by Jim and Ann Lowe (Vienna Village);

### Building Fund Gifts:

In memory of **John Shanks**, David Shanks' father, by Glenn and Sylvia Yarnell;

In memory of **Frank Kelly**, Debby Trivett's father, by Bo and Beth Houff, David and Brenda Shanks, Fred Moser, and the LUMC Adult Handbell Choir;

In memory of **Ruff Pierce** by Frank and Irene Foster;

In memory of **Dave Rock** by Frank and Irene Foster;

In memory of **Tom Voss** by Frank and Irene Foster;

In honor of **Tom and Margaret Lee's 50th Wedding Anniversary** by Bo and Beth Houff;

In honor of **Albert and Helen Boyd** by Bo and Beth Houff;

### CCC Tool Drive Gift:

In honor of **Jesse and Hunter Arnett** by Pat and Rob Arnett;

### Music Fund Gift:

In memory of **Frank Kelly** by Vince and Sharon Nisi.



### 2007 Church Officers and Leaders

Copies of the list of 2007 Church Officers and Leaders are available in the narthex and fellowship hall.

## 2006: A GROWING YEAR

This was truly an outstanding year at LUMC! Thanks to our valuable and hardworking staff, the flood of new members, expanding ministries, the hiring of a full-time Youth Ministry Director, the ground-swell of financial support both for 2006 and for 2007 has been a real source of joy. We have enjoyed the special Talent Show and community services with area churches at Thanksgiving and Easter. We are grateful for a tremendous Preschool program, for musical support, Cantata, handbells, and Praise Band and singers. So much to be thankful for in 2006. The mission work of our church at all age levels has been noteworthy with the \$6600 goal of the Bishop's Initiative for Overseas Missions almost in hand, the involvement and many dollars of support to Open Arms starting with the children's \$1500 program to age-level and Sunday School class support throughout the year, and the \$2500 to the Walter Henry Bolivia program, as Sue Henry retires (and will be our guest on January 14th), plus a new missionary to support from Cambodia. We have given to The Children's Home, Church-School Connection, Bethlehem Center (more will be done in 2007), and hundreds and hundreds of dollars and labor for flood buckets and our participation in helping to buy a truck for the work of WNC Missions, for Heifer Project, and dozens of other budgeted items we helped in 2006 and will increase support for in 2007.

Well done, good and faithful stewards!

No one was more excited about our 2006 report than myself and our District Superintendent at our Charge Conference or Bo Houff in his glowing words about our 2006/2007 stewardship efforts. We will keep our successful team moving forth. Personally, I promise to keep challenging us about making disciples, and working in the area of prospective visits, the very involved work with prospects of profession of faith, Baptisms, and incorporating of new members through a series of new member gatherings and the successful network that has brought us many new faces this year.

These are the newest "new members" as we finish 2006 and move into 2007:

- Jennifer and Ken Buck (Austin and Abby), 904 Ridge Gate Drive, Lewisville, NC
- Jenny and Will Davis (Riley and Camden), 350 Saddlebrook Circle, Lewisville, NC
- Barbara and E. C. Bryant, 405 Haven Ridge Drive, Apt. 3, Winston-Salem, NC
- Hunter and Jesse Arnett, 310 Glen Eagles Drive, Winston-Salem, NC
- Susan and Randy Orr, 8527 Brook Mill Drive, Lewisville, NC
- Marcy and Brad Daniel (Walker), 340 Fox Ridge Circle, Lewisville, NC

Grace and peace,  
Charles Turner

### OUR CHURCH FAMILY.....



**Congratulations to Aaron and Erica Church** on the birth of a daughter, **Mary Adelyn Church**, on December 19th. Mary has two brothers, Spencer and Finley.

**Sympathy:** We express our Christian love and sympathy to Pam Hurd in the death of her mother, Marjorie Seal, on December 22nd.

### CONFIRMATION CLASSES

If you have a youngster 12 years old or in the sixth grade or an older youth who is interested in Confirmation Classes, please let the church office (945-3203) know immediately.

**A meeting of all interested young people and parents is set for Sunday morning, February 11th, at 9:45 am in Asbury Hall.**





**Pam Green** is home-bound due to a car accident (broken heel). She could use some help with preparing lunch, light housekeeping (dishes, laundry, and dusting), and set-up for bathing. Any help would be appreciated. Please call Pam at 480-8583 or Paul at 480-8582 if you are able to help. Pam's surgery is scheduled for January 3rd.

## Attention, Worship Committee and Methodist Men

We will be putting up our Christmas decorations on Saturday, January 13th, at 9:00 am. Meet in the sanctuary.



## LUMC PRESCHOOL KINDERGARTEN NIGHT

Is your child ready for kindergarten? What is "readiness?" Please join us for the LUMC Preschool Kindergarten Night on Tuesday, January 23rd, at 7 pm in Asbury Hall. Guest speaker will be Lynn Parnell, Vienna Elementary School.



### LOOKING AHEAD

Feb. 4: Boy Scout Sunday  
March 11: Girl Scout Sunday

On both these days, scouts are invited to wear their uniforms and be recognized in the service.

**2007 Winston-Salem District Leadership Institute: Saturday, January 6th, 2007, at Burkhead UMC.** Time: 9 am—3:30 pm. Cost is \$8. Registration will continue to be open. There are many interesting and informative workshops offered. For a complete list of workshop topics and a registration form, call or come by the church office (945-3203). You can also register on-line, [www.winstonsalemDistrictumc.org](http://www.winstonsalemDistrictumc.org). **People who have not registered are still welcome to attend on January 6th.**

Workshops will not only be relevant to specific church committees and offices, but also informative for lay persons not currently holding leadership positions. **All lay persons—from youth to long-time church members—are encouraged to attend this conference for all or just a portion of the day.**



### Children's Church Schedule 8:30 am Worship Service

Jan. 7 Shelly and Jeff Ferner

**Please note:** Materials for Children's Church will be in the classroom for you to check out ahead of time as resources for Sunday morning activities. If unavailable to teach, please be responsible for finding your own substitute.



### 8:20 am Nursery Schedule

Jan. 7 Angie and Daniel Choplin  
Jan. 14 Carolyn, Melissa, and Amanda Benson  
Jan. 21 Marci and Jason Harvey  
Jan. 28 Sharon and Eva Hill

### 11:00 am Nursery Schedule

Jan. 7 Dan and Margaret Williams  
Jan. 14 Angie Pantazopoulos and Julie Owens  
Jan. 21 Beth Rudy and Darla Mullican  
Jan. 28 Paige and Tom Ballus

## Share the Warmth

The Trustees of the Duke Energy Foundation launch the annual Share the Warmth program.

Share the Warmth provides funds to help people in financial crisis to pay for winter utility bills. Your gift to Share the Warmth will be generously matched by the Duke Energy Foundation, dollar for dollar, up to a maximum of 50 per household and your organization gift dollar for dollar. The matching period is November 1, 2006, through March 15, 2007.

### Here's how you can help keep our neighbors warm this winter.

The Duke Energy Foundation will match your check, dollar for dollar, up to a maximum of \$50 per household from November 1, 2006, through March 15, 2007. The funds will be forwarded to Crisis Control Ministry and Sunnyside Ministry to pay the heating bills of families with emergency needs.

### Helping is as easy as 1—2—3

1. Complete the form in the next column.
- 2 Make your check payable to Duke Energy Share the Warmth program.
- 3, Mail to: Duke Energy Share the Warmth, P.O. Box 35469, Charlotte. NC 28254- 5429.

Please remember that your gift is only eligible for Share the Warmth matching funds from November through March.

This program is sponsored by Duke Energy Shareholders and is not paid for by Duke Energy customers..

Yes, I/we want to Share the Warmth!

Enclosed is my/our donation to the Duke Energy Share the Warmth program. I have enclosed \_\_\_\_\_checks for \$\_\_\_\_\_ each from our household or our organization.

Check #1:  
Name:  
County: Forsyth  
Amount: \$\_\_\_\_\_

Check #2:  
Name/Organization:  
County: Forsyth  
Amount: \$\_\_\_\_\_

Thank you for your contribution!

CRISIS CONTROL MINISTRY  
200 E. Tenth Street, Winston-Salem. NC 27101  
336.724.7875





## CAROLINA CROSS CONNECTION 2007

### TOOL DRIVE INFORMATION

Thank you for wanting to participate in the Tool Drive for the Carolina Cross Connection bound LUMC 2007 Summer Campers.

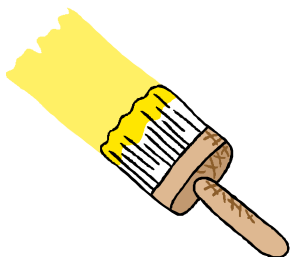
The tools that are collected will go toward the establishment of a permanent Carolina Cross Connection tool reserve hopefully eliminating the need for churches to bring equipment each summer.

All tools, equipment, and cash donations are 100% tax deductible. Checks can be made out to LUMC, stubbed Yokefellow Tool Drive, If you purchase new or used tools (pawn shops, yard sales, etc. ) please save the receipt for your tax records. If you need a receipt one can be generated for you by the Yokefellow Sunday School Class.

In 2006 Carolina Cross Connection's 1200 campers worked on 800 home improvement projects for the needy in Western North Carolina. A good supply of quality tools is essential to help maintain this ministry.

On the reverse side is a list of the equipment and tools needed for Carolina Cross Connection. Please take this sheet with you and use it as a guide when shopping for tools, Remember, no gift is too small. If you have any questions or concerns please contact Skip Morris at 766-0680.

(over)



**\*PLEASE NOTE: IF YOU BUY ANY OF THESE TOOLS AT THE HOME DEPOT ON HANES MALL BOULEVARD AND TELL A MANAGER THAT YOU'RE BUYING TOOLS FOR OUR CHURCH, YOU CAN RECEIVE A 10% DISCOUNT.**

# TOOL SHOPPING LIST FOR CAROLINA CROSS CONNECTION

- CLOTH NAIL APRONS
- CARPENTER OR REGULAR #2 PENCILS
- SLOTTED SCREWDRIVERS
- #2 PHILLIPS HEAD SCREWDRIVERS
- 16 OUNCE FIBERGLASS HANDLE HAMMERS
- 25 FOOT X 1 INCH MEASURING TAPES
- WONDER/WRECKING BARS
- SPEED SQUARES
- 4 FOOT LEVELS
- 2 FOOT LEVELS
- RETRACTABLE UTILITY KNIVES WITH BLADES
- CHALK BOXES WITH BLUE CHALK
- 25 OR 50 FOOT 14 GAUGE 3 PRONG ELECTRICAL EXTENSION CORDS
- 2 PRONG TO 3 PRONG ELECTRICAL ADAPTERS
- ELECTRIC 7 ¼ INCH CORDED CIRCULAR (SKIL) SAW WITH CARBIDE TIPPED FRAMING BLADES
- ELECTRIC 3/8 INCH CHUCK CORDED DRILLS
- ELECTRIC 1/4 INCH CHUCK CORDED DRILLS
- 1/4 INCH AND 5/8 INCH WOOD BORING AUGER BITS
- 1/4 INCH AND 5/8 INCH WOOD BORING SPADE BITS
- ELECTRIC CORDED RECIPROCATING SAWS (SAWZALL)
- 9 INCH AND 12 INCH RECIPROCATING SAW BLADES
- ADJUSTABLE WRENCHES (CRESENT WRENCHES)
- PLIERS
- VICE GRIP PLIERS
- ROUND POINTED SHOVELS
- SQUARE POINTED SHOVELS
- POST HOLE DIGGERS
- MATTOX
- LEAF RAKES
- IRON TOOTH GRADING RAKES
- GARDEN HOSES WITH ADJUSTABLE NOZZLES
- PUSH BROOMS
- HOUSE BROOMS
- DUSTPANS
- PAINT ROLLER TRAY KITS
- PAINT ROLLER POLE EXTENSIONS
- 3 INCH PAINT BRUSHES
- 2 INCH PAINT BRUSHES
- PAINT SCRAPERS
- DISPOSABLE PAINT DROP CLOTHES
- 100 GRIT SHEETROCK SANDPAPER
- HAND HELD NON ELECTRIC SHEETROCK SANDING PAD
- LOTS OF PRAYER



**LEWISVILLE IS A  
STEPHEN MINISTRY CHURCH**

Stephen Ministers are trained lay care-givers who provide emotional and spiritual care to persons who are experiencing difficulties in their lives—hospitalization, loss of a loved one, loss of job, or any other crisis situation. This is care in addition to the care the pastor gives. If you are interested in having a Stephen Minister, fill out one of the slips in the pew rack and put it in the offering plate or hand it to the minister or one of the Stephen Leaders, Nancy Russell or Tom Lee.